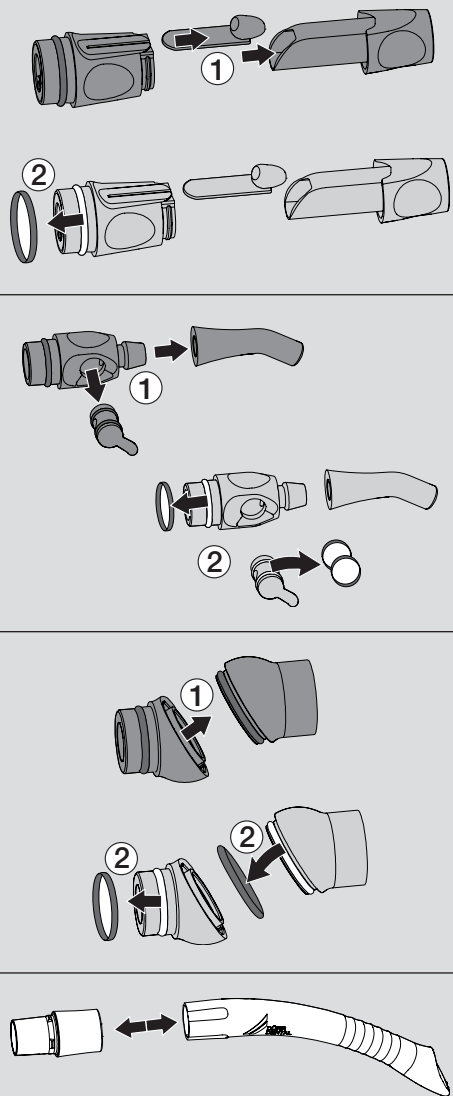


DE Kurzanleitung Saughandstücke

EN Short Instruction suction handpieces



Informationen zur manuellen und maschinellen Aufbereitung siehe Montage- und Gebrauchsanweisung Schlauchablage Comfort, Best.-Nr.: 9000-606-18
Siehe auch Download-Bereich unter www.duerrdental.com

Information for manual and automatically preparation of materials refer to the hose manifold Comfort Installation and Operating Instructions, order no.: 9000-606-18
See also download pages at www.duerrdental.com

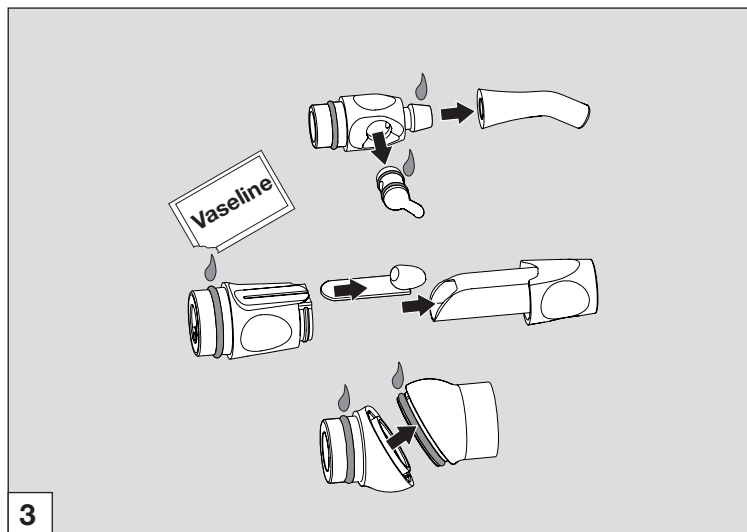


Thermodesinfizieren und Reinigen



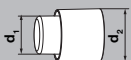
Dampfsterilisieren bei 134 °C

2



1





Bei den Bestellnummern muss ? durch A = grau oder S = schwarz ersetzt werden. Beispiel: 7600A010-22 für grau oder 7600S010-22 für schwarz

When ordering one of the following parts replace the symbol in the order number ? by A = for grey or S = for black coloured parts.

Example: 7600A010-22 for grey or 7600S010-22 for black

Adapter

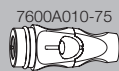
Name	d ₁	d ₂	Form/Shape	Ref. Nr./No.
Universal Ø 8 mm	8,0	26,3		7600010033
Universal Ø 10 mm	10,0	26,3		7600?010-10
Universal Ø 18,0 mm	18,0	26,3		7600?010-18
A-dec	17,0	26,3		7600?010-16
KaVo	20,0	26,3		7600?010-19
Dürr Comfort	19,0	26,3		7600?010-20
Dürr Eco / Selectiv	21,0	26,3		7600?010-22
Universal Ø 18,0 mm	18,0	26,3		7600?010-23
Universal Ø 18,0 mm	18,0	26,3		7600?010-25
A-dec	14,0	26,3		7600100001

Kugelenk Ball joint

optional



Saughandstücke groß Large handpiece



Drehhülsen Sleeve

optional

7600?010-08



7600?010-09



7600?010-04



7600010034



7600?010-30



7600?010-31



7600?010-07



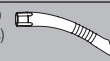
Kanülen Cannula

Ø 16 mm

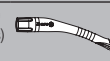
0700-055-50
(5 Stk./pieces)
grau / grey



0700-059-50
(5 Stk./pieces)
grau / grey



A700056050
(5 Stk./pieces)
grau / grey



0700-058-50
(4 Stk./pieces)
grau / grey



7068-003-05
7068100001



Ø 9 mm

Ø 11 mm

0700-057-50
(5 Stk./pieces)
grau / grey



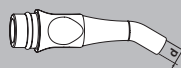
Adapter

Name	d ₁	d ₂	Form/Shape	Ref. Nr./No.
Universal Ø 6 mm	6,0	20,7		7600?020-06
Universal Ø 6 mm	6,0	21,0		7600020018
A-dec	7,2	21,0		7600?020-07
KaVo	8,0	21,0		7600?020-08
KaVo	8,0	21,0		7600020008
A-dec	7,2	21,0		7600?020-09
Cattani	10,0	21,0		7600?020-10
Dürr Comfort	10,0	21,0		7600?020-11
Universal Ø 6,5 mm	6,5	18,0		7600?020-12
Universal Ø 10,0 mm	10,0	21,0		7600?020-13
Belmont	10,0	21,0		7600?020-17
A-dec	10,0	21,0		7600100002

Saughandstücke klein Small handpiece

d = 6±0,1 mm

7600?021-00



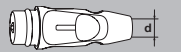
7600?020-55



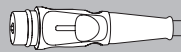
7600?020-00



7600?025-50



7600?025-00



Chirurgische Absaugkanülen Surgical suction cannula

0700-007-50 / Ø 2,5 mm (20 Stk./pieces)
0700-007-51 / Ø 2,5 mm (100 Stk./pieces)

